

LDaemon

This document is provided as a step by step procedure for setting up LDaemon and common LDaemon clients.

LDaemon.....	1
What you should know before installing LDaemon:	2
ACTIVE DIRECTORY	2
POSTMASTER ACCOUNT	2
Walk-through for LDaemon installation:.....	3
This will conclude the LDaemon installation.	8
FROM THE MDAEMON MANUAL:	9
LDAP Options	10
LDaemon LDAP Server	12
Address Books	13

What you should know before installing LDaemon:

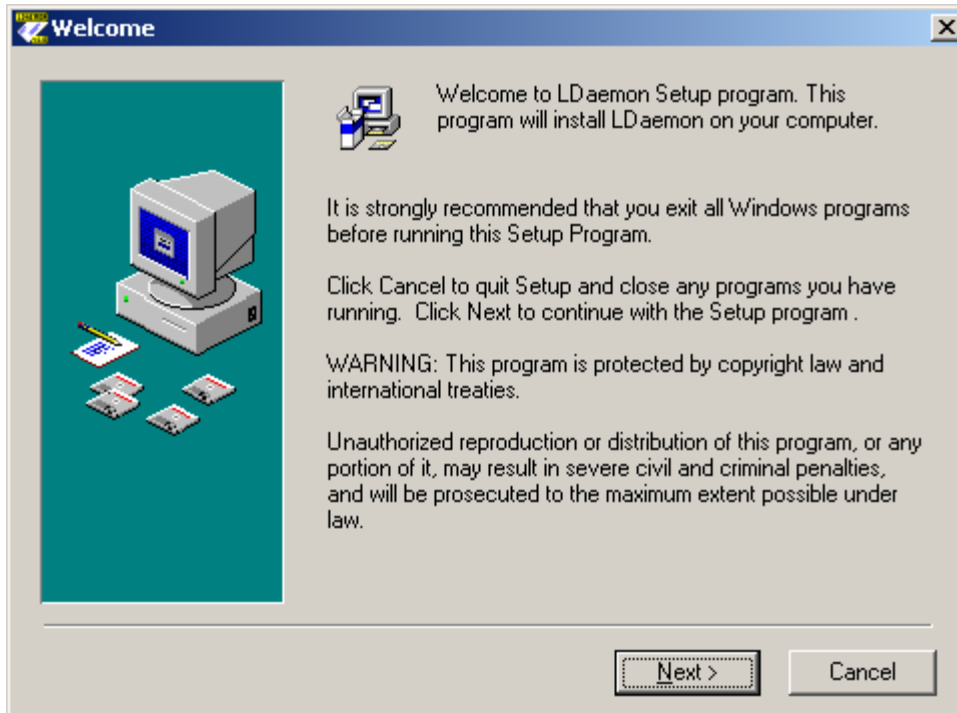
ACTIVE DIRECTORY

If you will be installing onto a Windows 2000 Server, check to see if you are running an Active Directory. You can easily find out by running “netstat -a >netstat.txt” at a command prompt, view the netstat.txt file and look for LDAP and LDAPS running. If Active Directory is running it will be necessary to configure LDaemon to use an open port other than port 389.

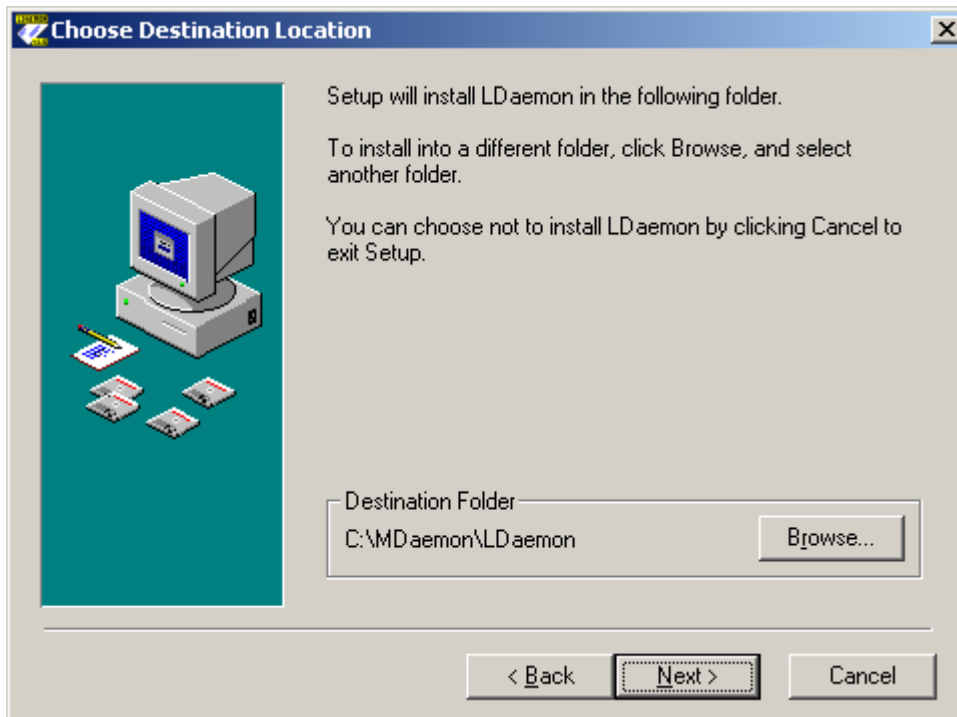
POSTMASTER ACCOUNT

When you install LDaemon it is a must that you use the correct Bind DN (LDAP Admin account). This has to be your MDaemon postmaster account. If you don't use the correct account LDaemon will not function correctly with MDaemon, account migrations will fail, etc.

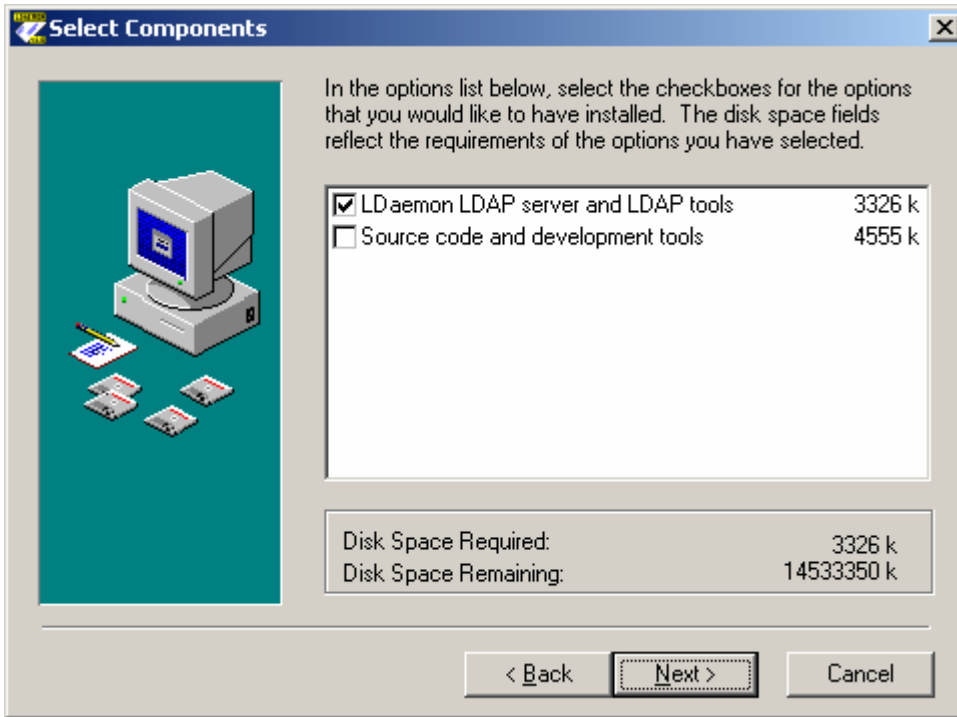
Walk-through for LDaemon installation:



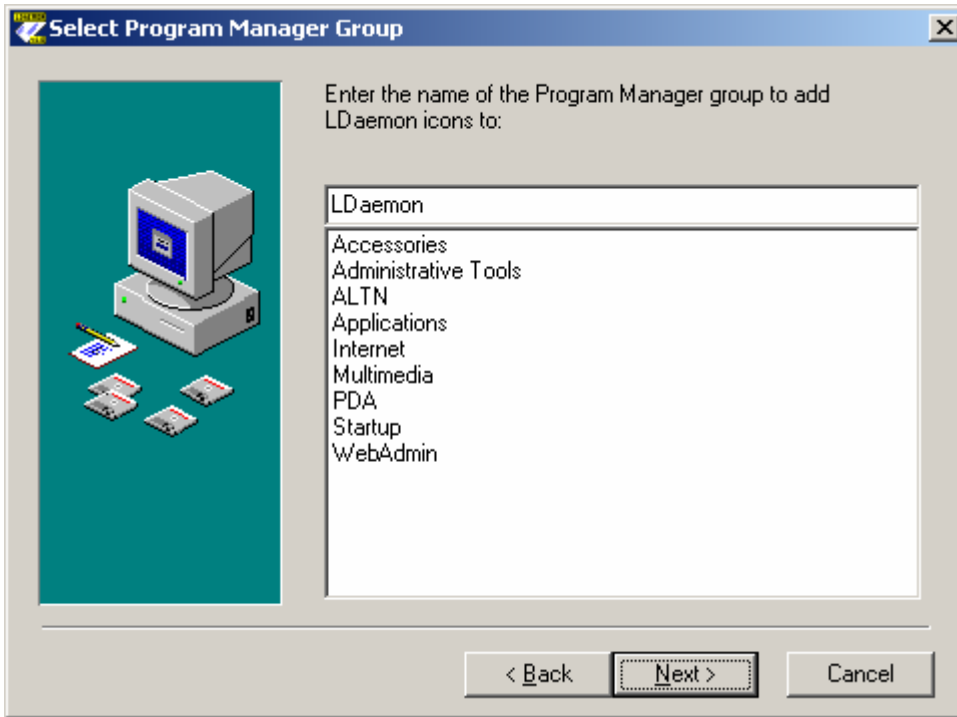
Welcome screen, no configuration necessary, click Next.



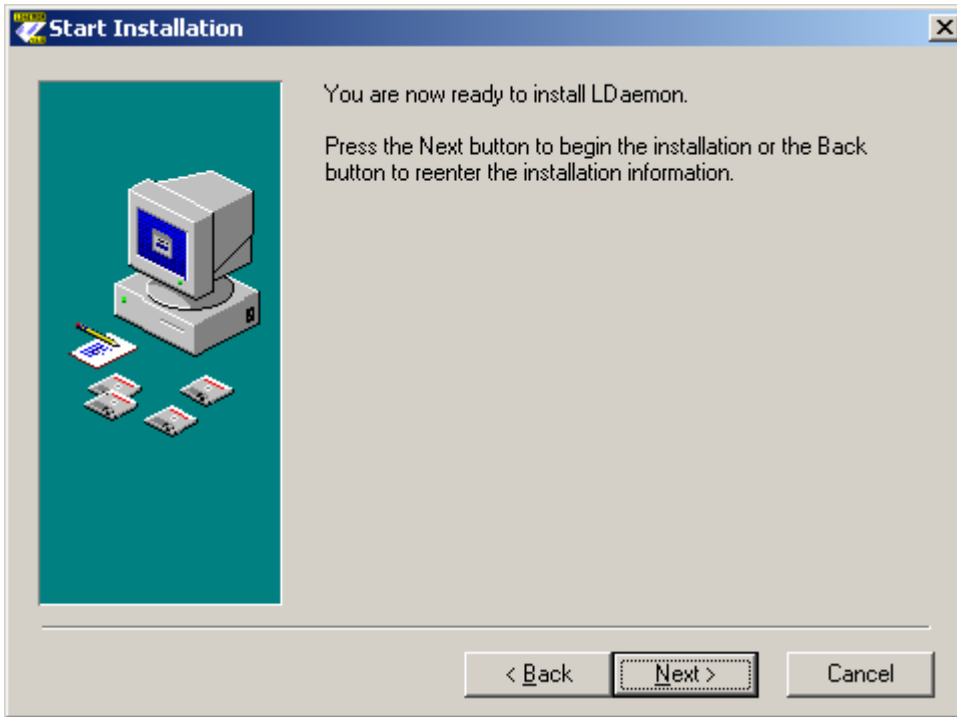
Select the path you wish to install LDaemon to.



Select the components you wish to install.



Select the Program Manager folder you wish to contain the shortcuts to LDaemon.



Click Next here, no configuration needed.



This is the MOST important step of the installation process.

Company or Organization name: (may not contain commas)

Select your country: select from the drop-down list

Administrator's name: This has to be the Full Name of the postmaster account (it is recommended that you check this in MDAemon's account manager before continuing)

Administrator's email address: Include the domain name (example postmaster@altn.com)

Administration password: Has to match the password for the postmaster account within MDAemon.

Click Next.

This will conclude the LDAemon installation.

FROM THE MDAEMON MANUAL:

LDaemon LDAP Server Support

Support for Alt-N Technologies' LDaemon LDAP Server has been integrated into MDAemon. LDaemon provides corporate-wide global address book capability compatible with virtually all email clients including Microsoft Outlook, Outlook Express, and Eudora. It is an LDAPv3 Windows NT/2000 port of open-source SLAPD, developed by the University of Michigan and enhanced by Alt-N Technologies for use with MDAemon. It is distributed as a separate module and installed in plug-in fashion.

You can acquire LDaemon from <http://www.altn.com/LDaemon/>.

Several controls have been placed within the MDAemon that allow you to start, stop, and monitor the status of LDaemon, including a configurable command line for starting it. This optional configuration setting allows you to start the LDaemon service using any or all of the LDAP server's command line switches.

For example: "-h ldap://:1001" starts LDaemon using port 1001 rather than the default port of 389.

LDAP Options

LDAP Options

LDAP options

Note: LDAP functionality under Windows 95 requires IE 3 or greater.

Use standard flat file USERLIST.DAT as account database.

Use LDAP server as complete backend user database (PRO version only)

Mirror account email addresses and full names to LDAP address book
This option keeps an LDAP server up to date with address information.

LDAP server properties

Host name or IP: mail.altn.com Port: 389

Base entry DN: o=altn.com, c=US

RDN filter: mail=\$EMAIL\$

Bind DN: cn=Administrator, o=altn.com, c=US

Bind password: xxxxxxxx

Object class: MDaemonUser

Configure

See the MDaemon Users Manual for an explanation of these LDAP fields.

OK Cancel

LDAP Options

Use standard flat file USERLIST.DAT as account database

Choose this option if you want MDaemon to use its internal USERLIST.DAT file as the account database. This is MDaemon's default setting and causes all of the MDaemon user account information to be stored locally.

Use LDAP server as complete backend user database (PRO version only)

Select this option if you want MDaemon to use your LDAP server as the MDaemon user database rather than its local USERLIST.DAT system. You might want to use this

112 LDAP/ADDRESS BOOK OPTIONS 113

method of maintaining your user information if you have multiple MDaemon servers at different locations but want them to share a single user database. Each MDaemon server would be configured to connect to the same LDAP server in order to share user information rather than storing it locally.

Mirror account email addresses and full names to LDAP address book

If you are using the default USERLIST.DAT method of maintaining your account database rather than the LDAP server method, you can still keep an LDAP server up to date on all of your users' names and email addresses by enabling this checkbox. Thus, you can use the LDAP server as a global address book system for your users without having to use it as a complete backend user database.

LDAP Server Properties

Host name or IP

Enter the host name or IP address of your LDAP server here.

Port

Specify the port that your LDAP server is monitoring. MDaemon will use this port when posting account information to it.

Base entry DN

Enter the distinguished name of the base entry (root DN) that will be used in all of your MDaemon user entries.

RDN filter

The relative distinguished name (RDN) is the leftmost component in each entry's distinguished name (DN). For all peer entries (those sharing a common immediate parent) the RDN must be unique, therefore we suggest using the email address of each user as their RDN to avoid possible conflicts. Using the \$EMAIL\$ macro as the value of the attribute that you specify in this control will cause it to be replaced by the user's email address when their LDAP entry is created. The user's DN will be comprised of the RDN plus the *Base entry DN* above.

CHAPTER 7 114 ***Bind DN*** Enter the DN of the entry to which you have granted administrative access to your LDAP server so that MDaemon can add and modify your MDaemon user entries. This is the DN used for authentication in the bind operation.

Bind Password

This password will be passed to your LDAP server along with the *Bind DN* value for authentication.

Object class

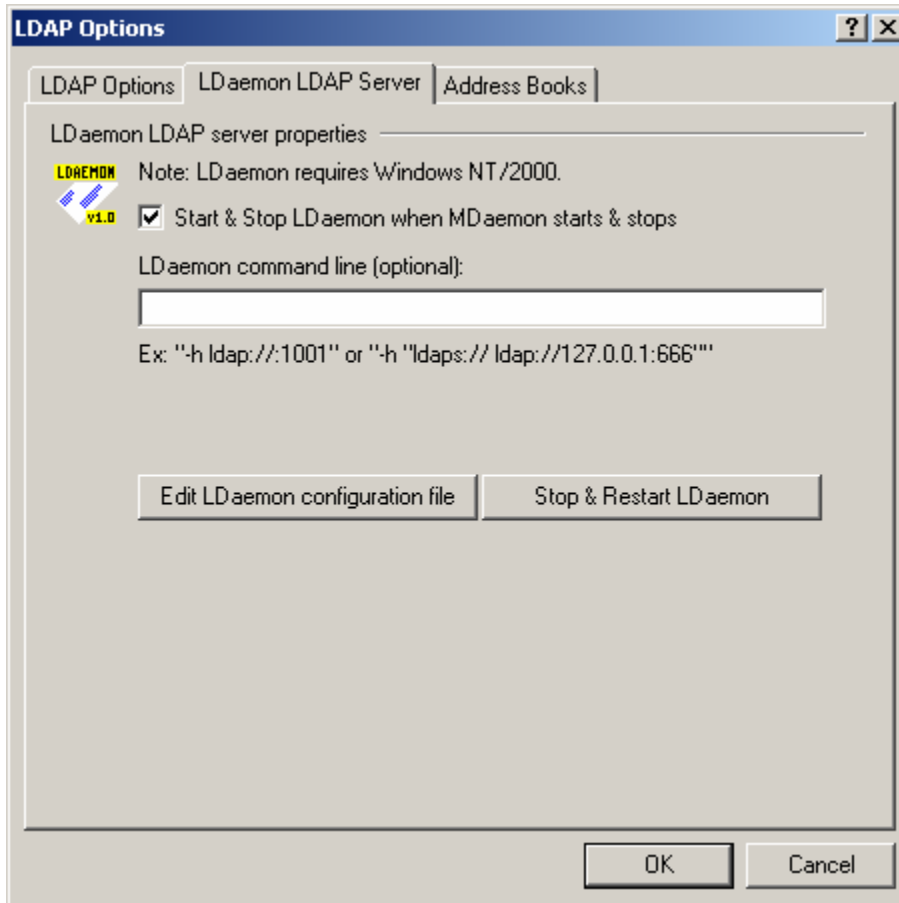
Specify the object class to which each MDaemon user's entry must belong. Each entry will contain the `objectclass=` attribute with this as its value.

Configure

Click this button to open the LDAP.dat configuration file in a text editor. It is used for designating the LDAP attribute names that will correspond to each MDaemon account field.

LDaemon LDAP Server

This tab is used to control Alt-N Technologies' LDaemon LDAP server. Note: these controls will not be available until LDaemon has been installed. LDaemon can be downloaded free of charge from <ftp://ftp.altn.com/LDaemon/>.



LDaemon LDAP Server Properties

Start & Stop LDaemon when MDAemon starts & stops

Click this checkbox if you want to launch the LDaemon LDAP server when MDAemon starts, and stop it when MDAemon stops.

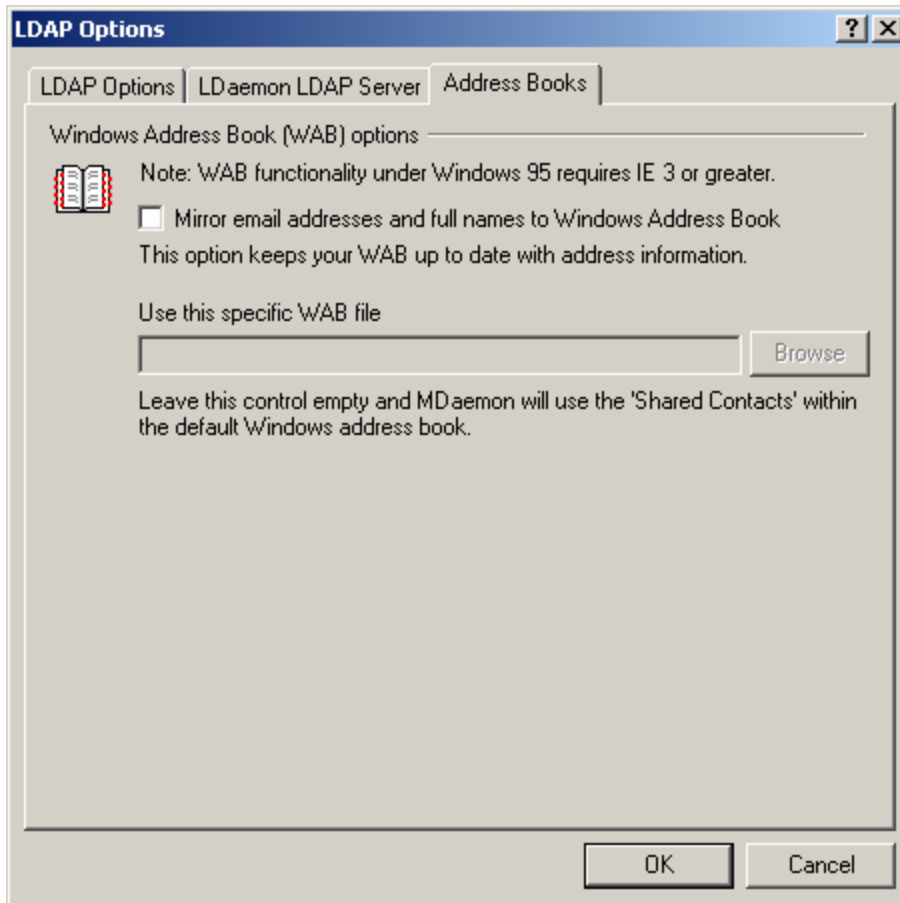
LDaemon command line (optional) If you wish to utilize some command line switches for LDaemon you can do so by typing the command line into this control.

Edit LDaemon configuration file

Click this button to open the LDaemon configuration file for editing in the default text editor.

Stop & Restart LDaemon

After make any changes to LDaemon, click this button to stop and restart the LDAP server so that your changes will be implemented.



LDAP/ADDRESS BOOK OPTIONS

Address Books

MDaemon version 5 has the ability to automatically keep a Windows Address Book file (*.wab) or Microsoft Outlook Contact Store current with each account's full name and email address. This is desirable for those who wish to share an address book among users of products like Outlook, but do not wish to use an LDAP server for that purpose.

Mirror email addresses and full names to Windows Address Book

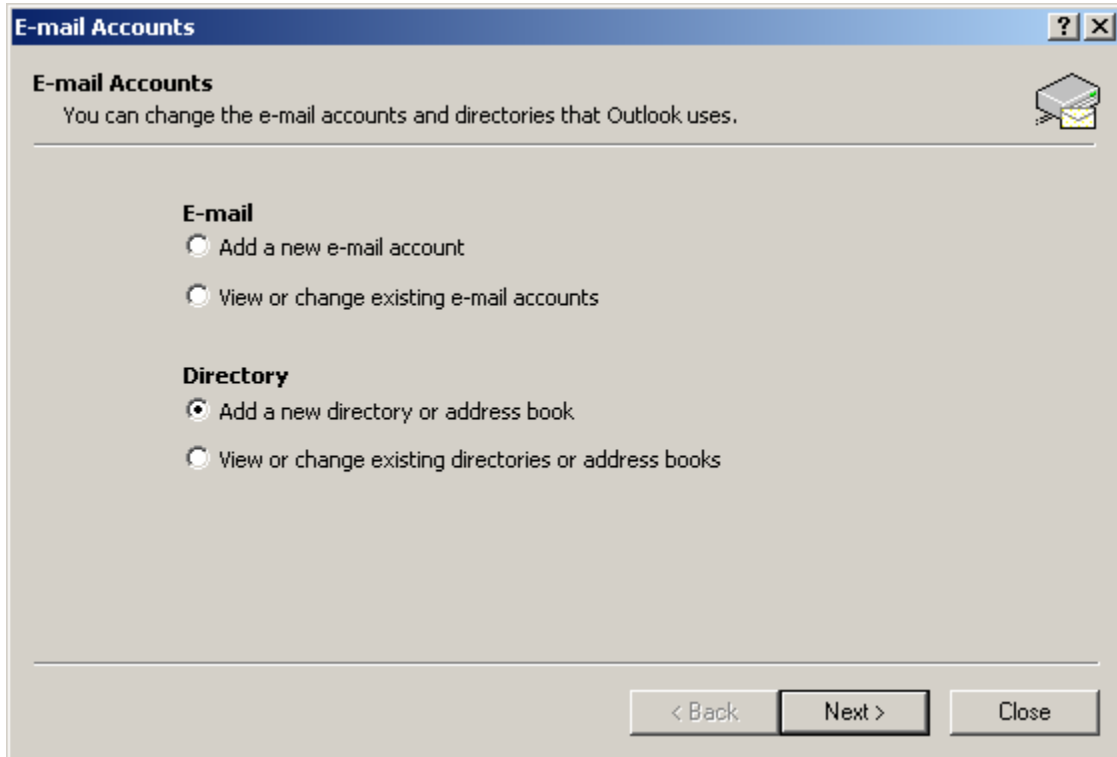
Enable this checkbox if you want your users' names and email addresses to be mirrored to a *.wab file or the Microsoft Outlook Contact Store. In the Windows Address Book, on the Tools|Options menu, you can configure whether or not your Windows Address Book will share contact information between Outlook and other applications by storing data in the Microsoft Outlook Contact Store or maintain it in an address book (*.wab) file.

Use this specific WAB file

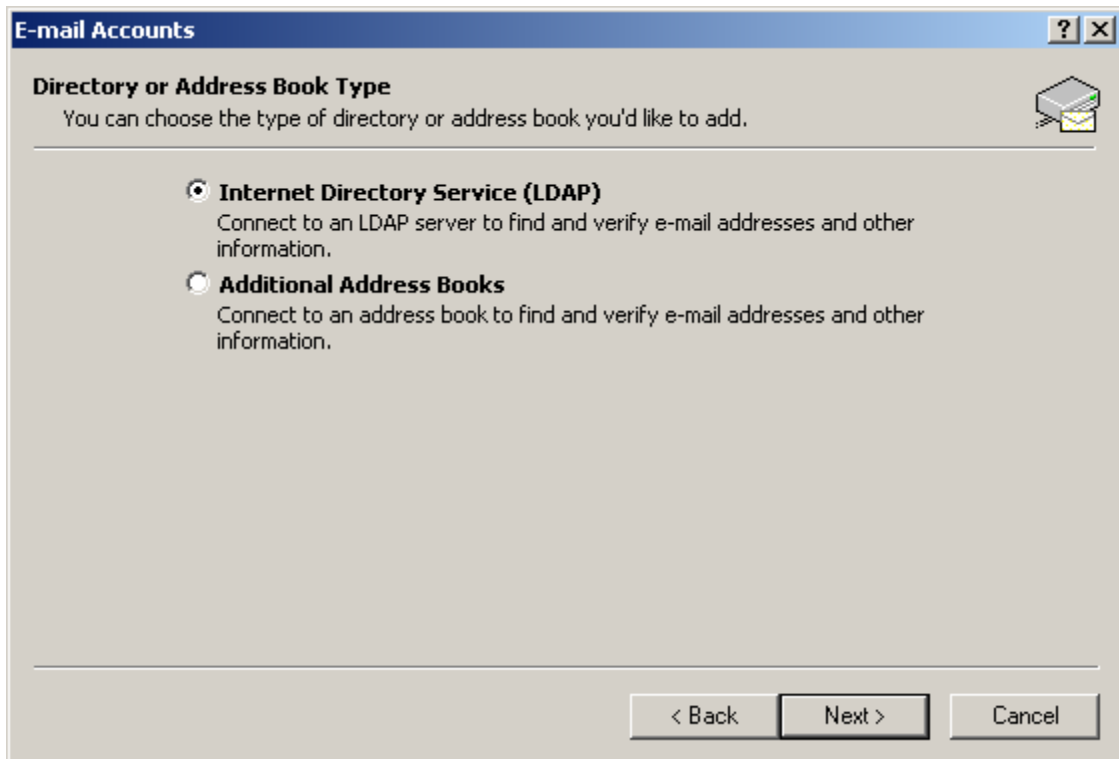
Specify the path to the *.wab file in which you wish to mirror your user information. If you leave this control empty then MDaemon will use the shared contacts store within the default Windows Address Book.

Configure Outlook XP for use with LDaemon server.

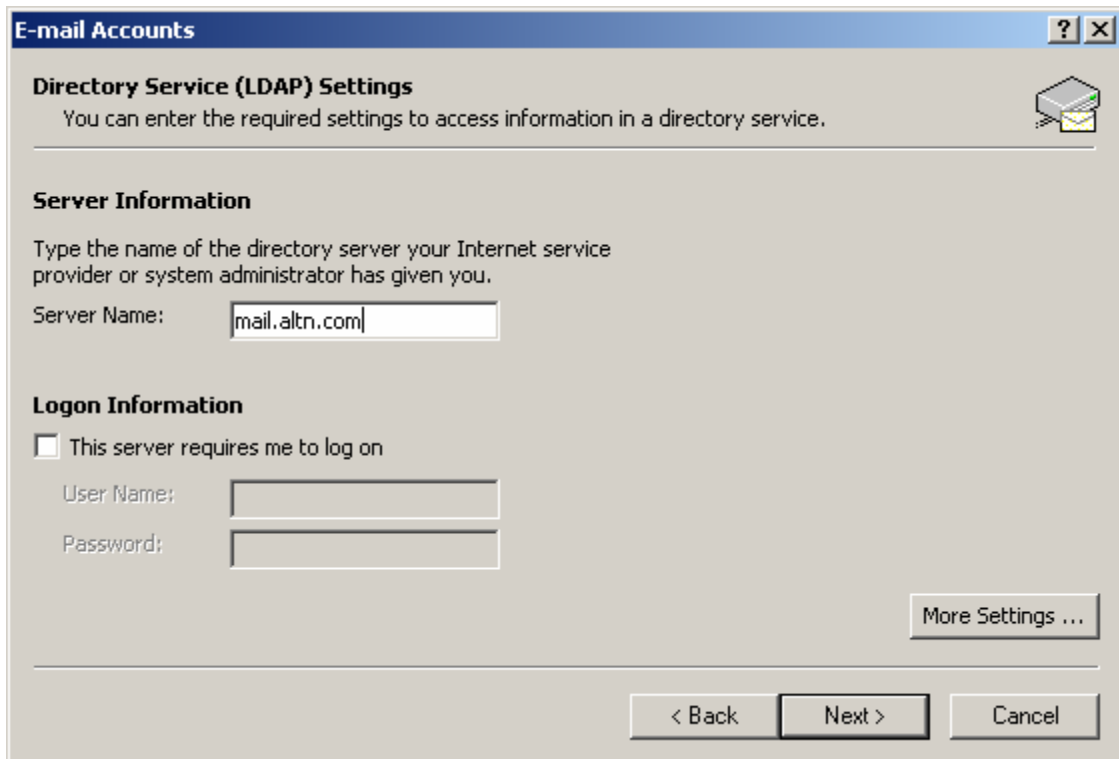
From Outlooks menu select “Tools”, then “Email Accounts”.



Select “Add a new directory or address book” located underneath “Directory” and click Next.

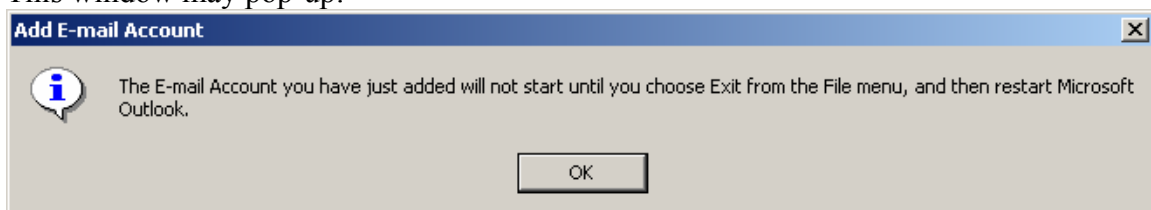


Make sure "Internet Directory Service (LDAP)" is selected and click Next.

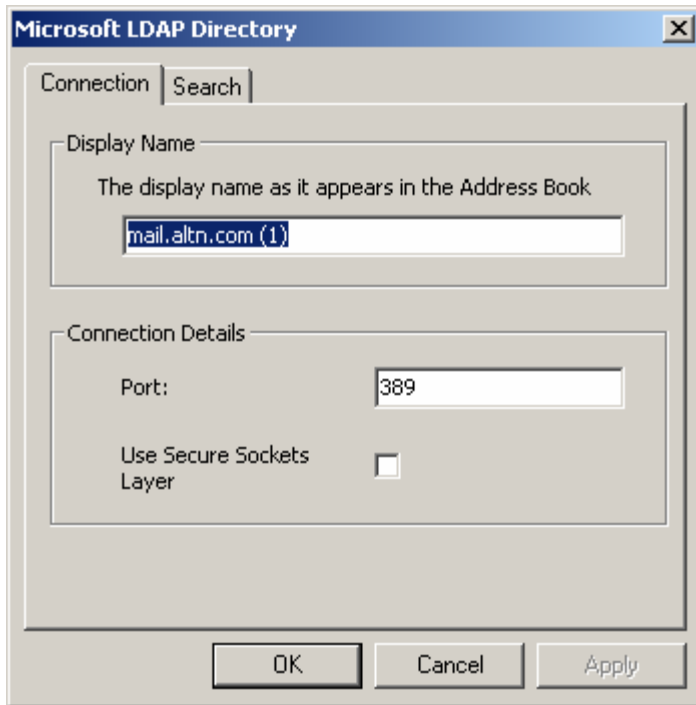


Type in your servers IP or hostname.domainname.toplevel and click “More Settings...”

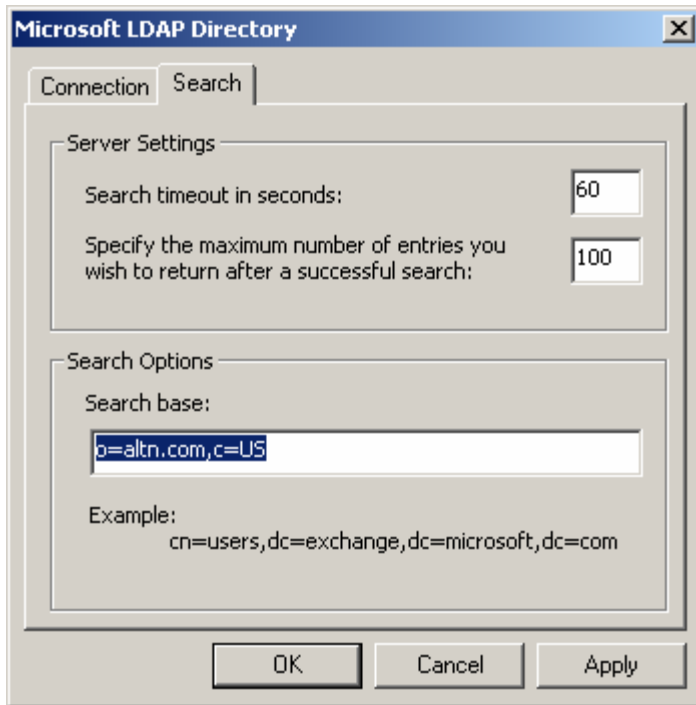
This window may pop-up:



Ignore this, you can click OK.



Display name field doesn't effect anything, its for your eyes only.
The Port field should match the port that you specified in LDAemon's configuration.



You may specify timeouts, but the defaults are fine. You can tweak on these for slow network connections.

Search Options

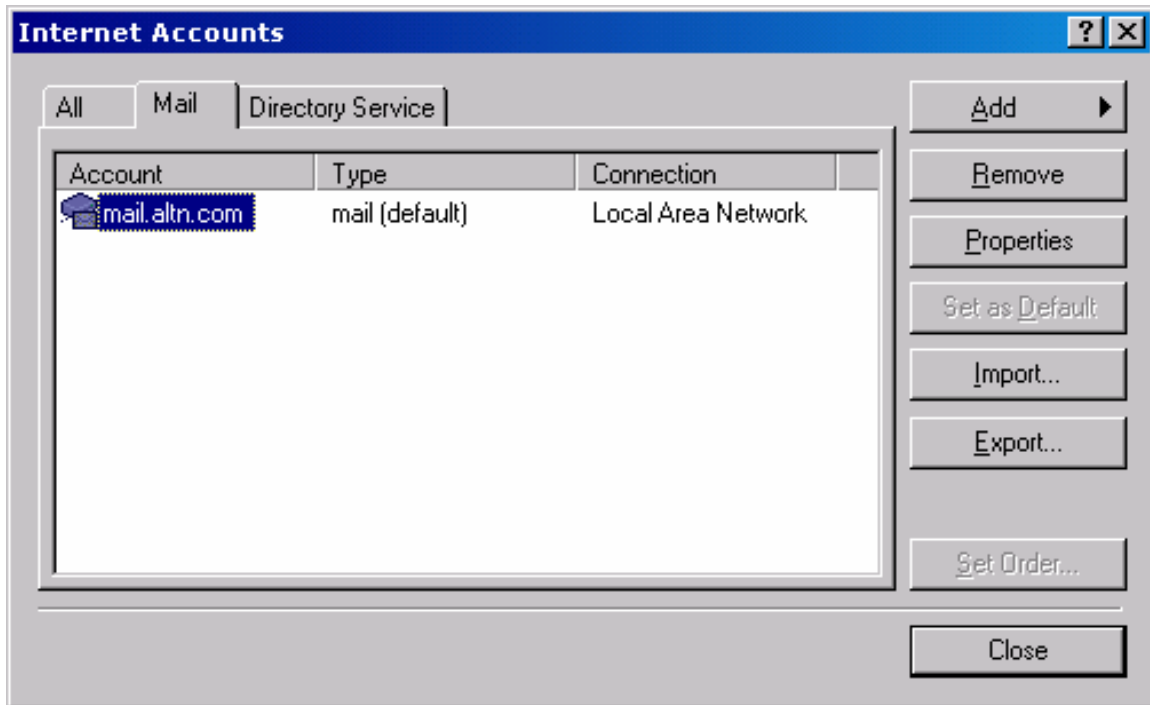
The search base is the most important part of the client configuration.

This should EQUAL what you specified as the "Base DN" in LDAemon's configuration.

Outlook 2000

To add a directory service to Outlook 2000 start by selecting the Tools menu, then Accounts.

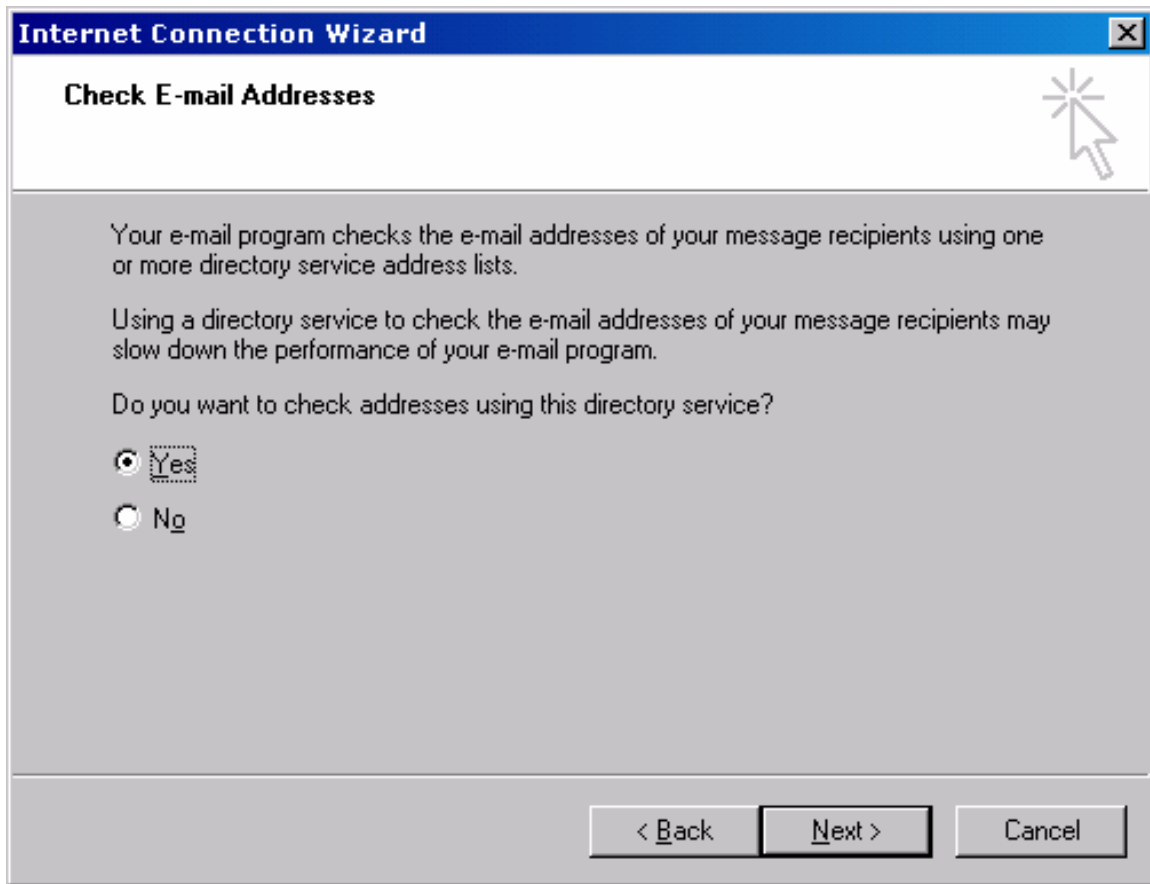
This window should appear.



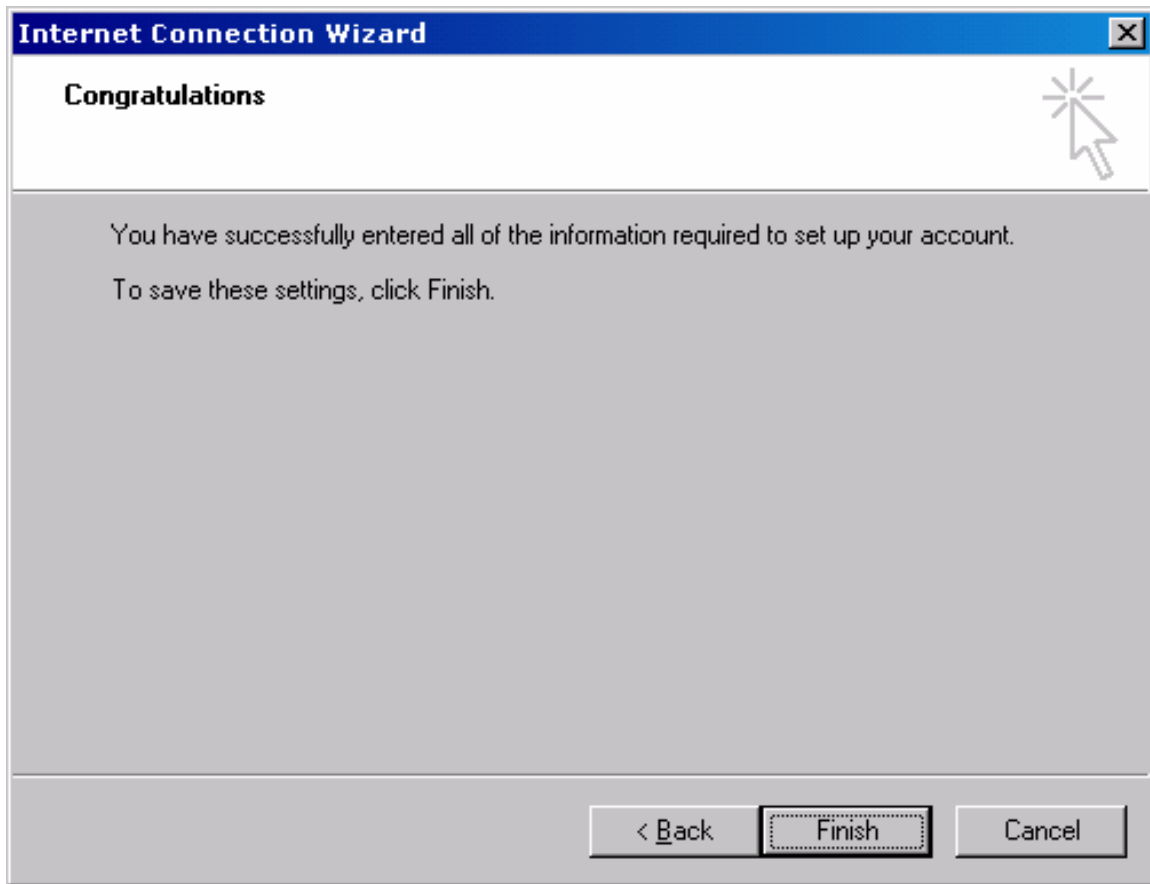
Select Add then Directory Service.

The screenshot shows a Windows-style dialog box titled "Internet Connection Wizard" with a close button (X) in the top right corner. The main heading is "Internet Directory Server Name". Below the heading is a text area with the instruction: "Type the name of the Internet directory (LDAP) server your Internet service provider or system administrator has given you." A text input field is labeled "Internet directory (LDAP) server:" and contains the text "mail.altn.com". Below this is another instruction: "If your Internet service provider or system administrator has informed you that they require you to log on to your LDAP server and has provided you with an LDAP account name and password, select the check box below." There is a single checkbox labeled "My LDAP server requires me to log on", which is currently unchecked. At the bottom of the dialog are three buttons: "< Back", "Next >", and "Cancel". A mouse cursor is visible in the top right corner of the dialog area.

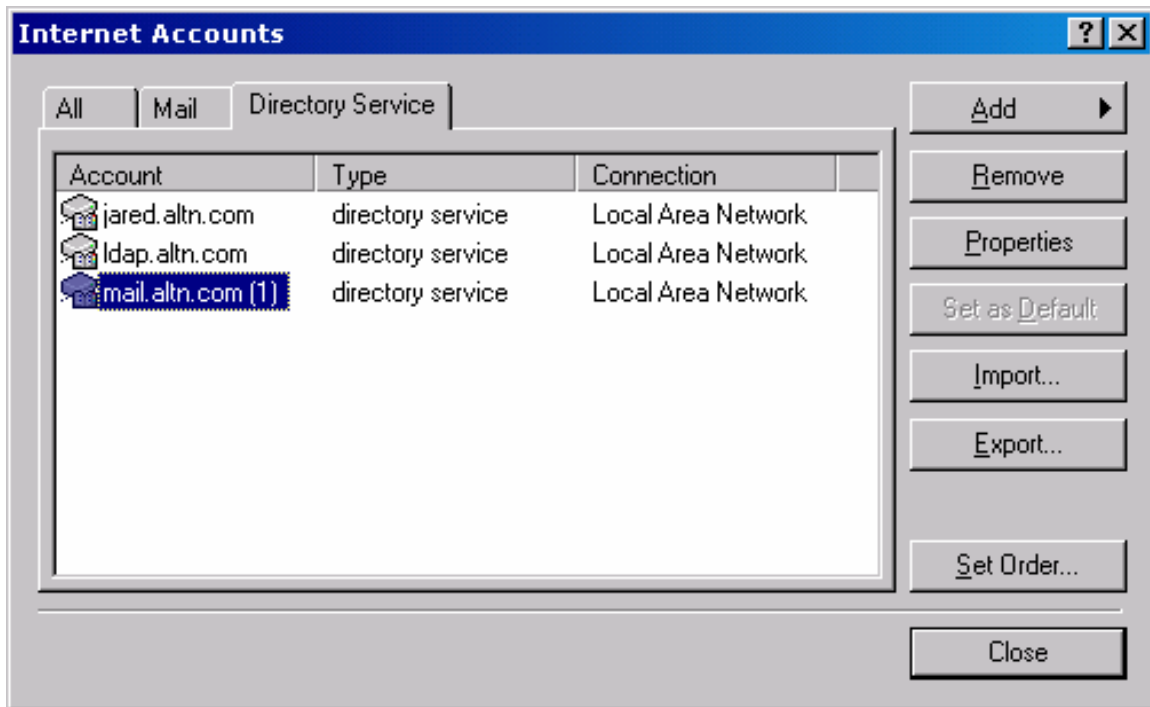
In the Internet directory (LDAP) server field enter the host name and FQDN of the LDAP server you will be connecting to. Click Next.



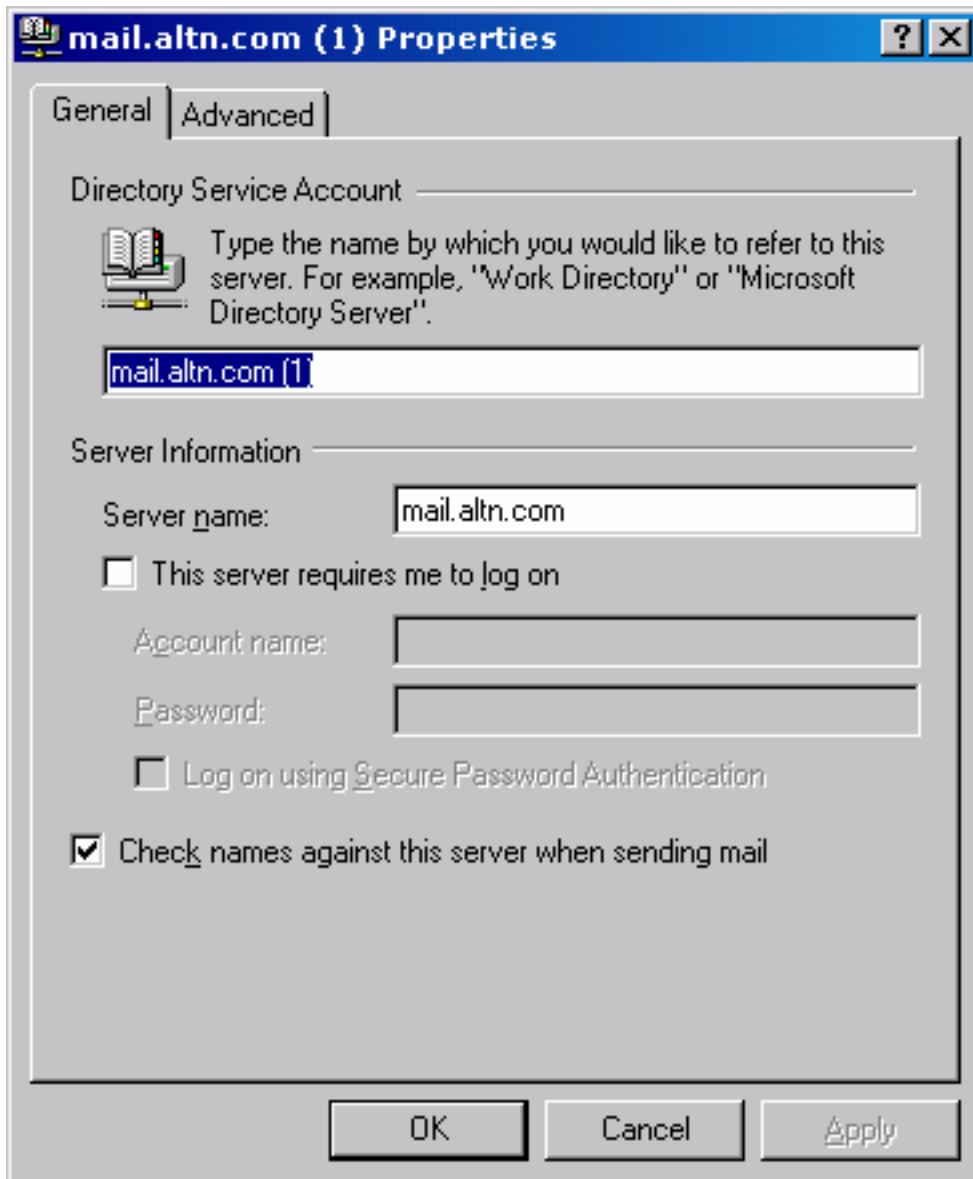
This option when enabled will check your addresses, automatically, after entering them into the To:, CC:, and BCC: fields of new emails. Make your selection and click next.



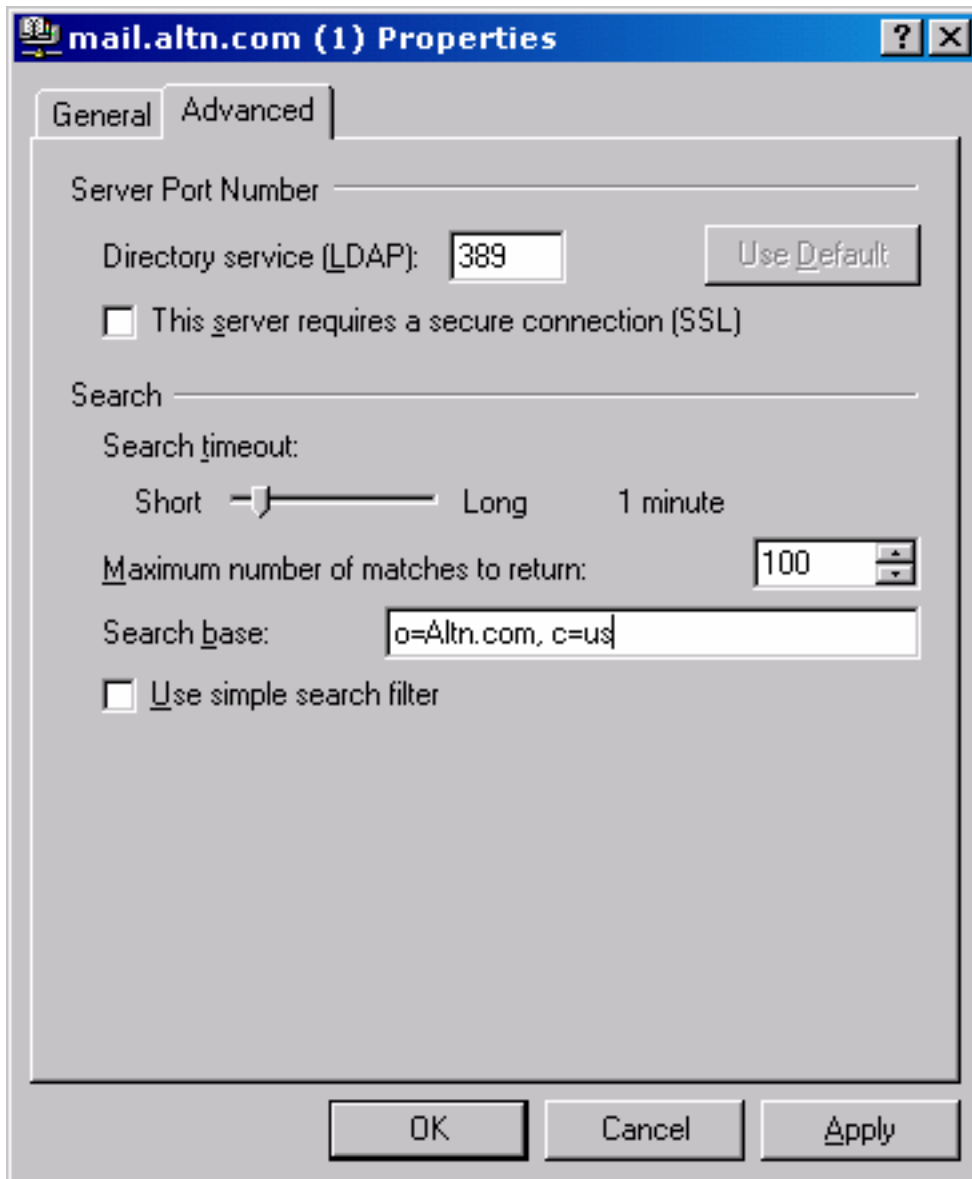
Click Finish. But you are not done configuring the LDAP client. You still need to tell the client how it will be searching the directory.



Select your directory service and click properties.



Verify the settings here and select the Advanced tab.



Server Port Number

By default you will be using port 389, in some cases you may be running an Active Directory on your server and would have configured LDAemon to use a port other than 389, if this is the case edit the LDAP port to correspond to the port you configured LDAP to use.

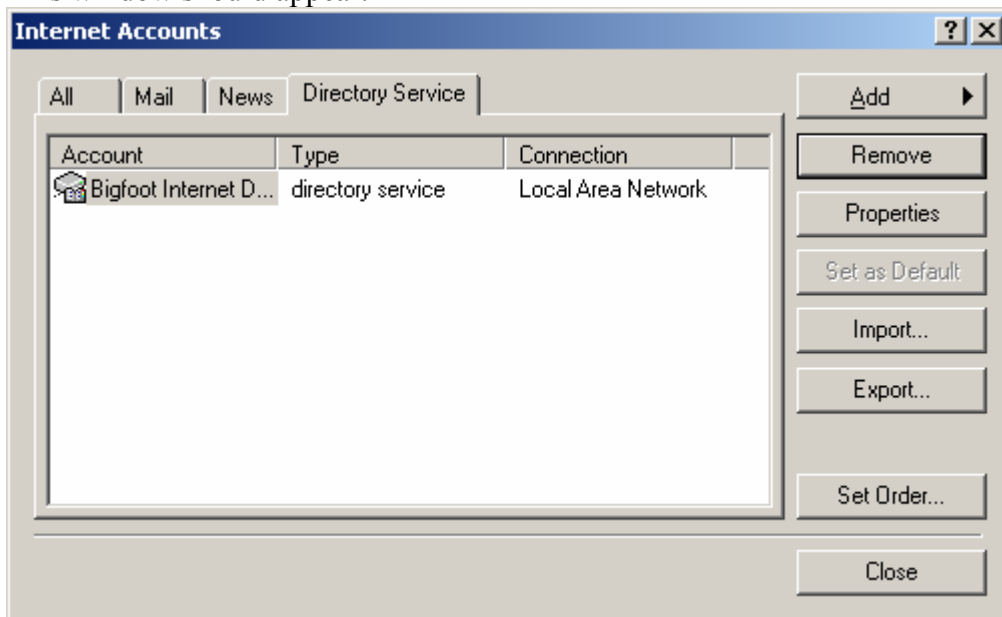
Search

The search base is the same thing as the Base DN in your LDAemon/LDAP configuration. So enter the search base/base DN accordingly.

Outlook Express 5

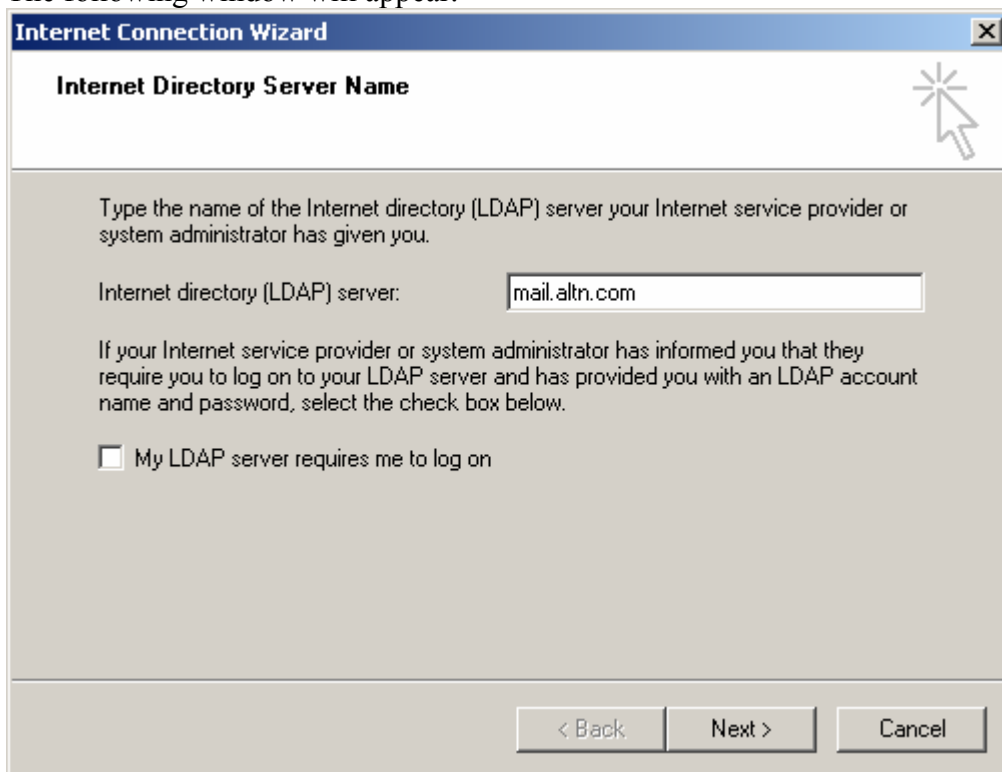
To add a directory service to Outlook Express 5 start by selecting the Tools menu, then Accounts.

This window should appear.



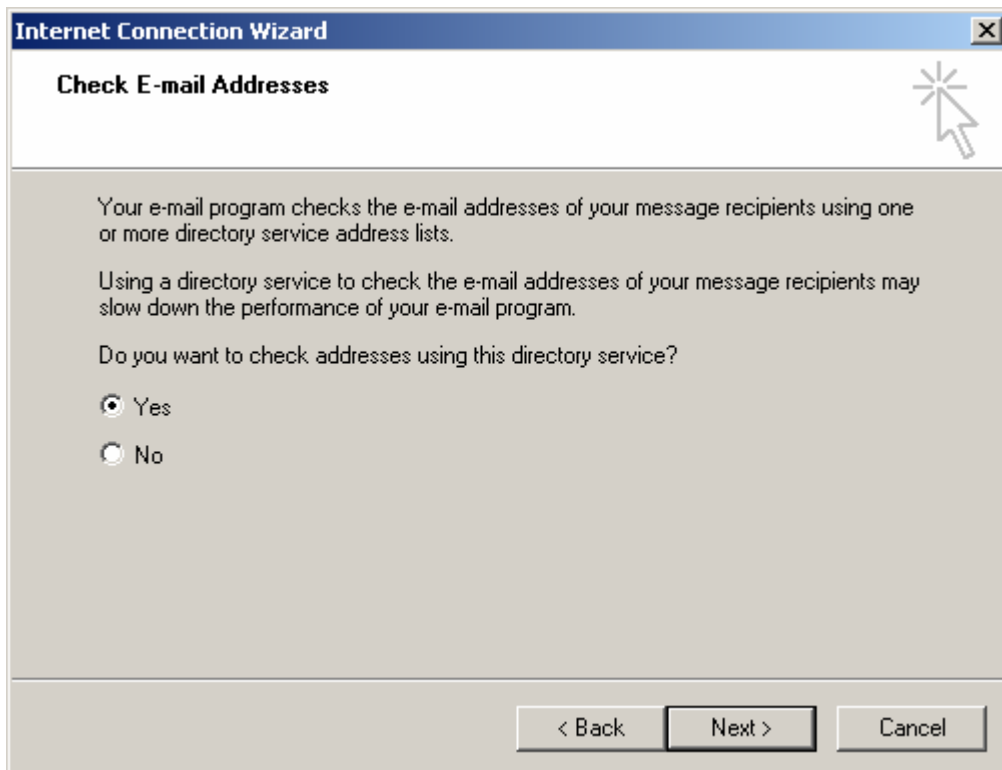
To add the directory service, select Add then Directory Service.

The following window will appear.



The screenshot shows a Windows-style dialog box titled "Internet Connection Wizard" with a close button (X) in the top right corner. The main heading is "Internet Directory Server Name". Below the heading, there is a text box with the instruction: "Type the name of the Internet directory (LDAP) server your Internet service provider or system administrator has given you." The text box contains the value "mail.altn.com". Below this, there is another instruction: "If your Internet service provider or system administrator has informed you that they require you to log on to your LDAP server and has provided you with an LDAP account name and password, select the check box below." There is a checkbox labeled "My LDAP server requires me to log on" which is currently unchecked. At the bottom of the dialog, there are three buttons: "< Back", "Next >", and "Cancel".

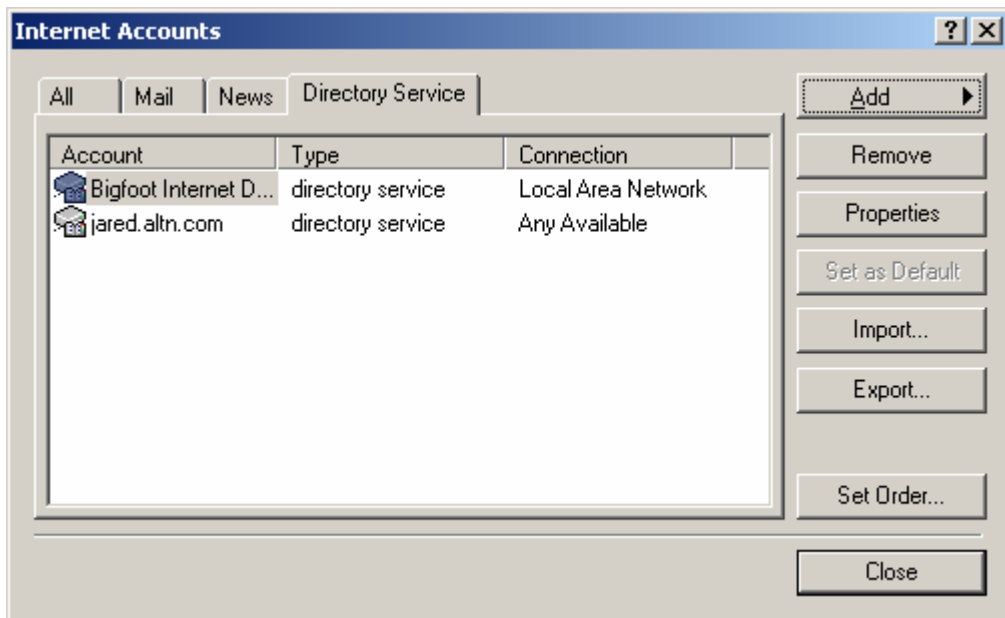
In the Internet directory (LDAP) server field enter the host name and FQDN of the LDAP server you will be connecting to. Click Next.



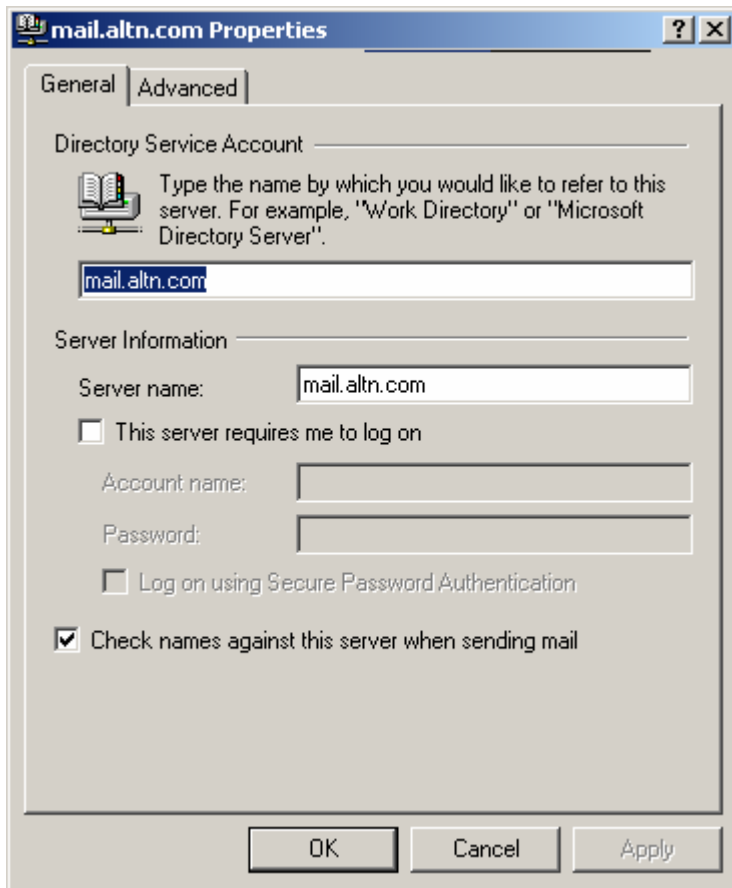
This option when enabled will check your addresses, automatically, after entering them into the To:, CC:, and BCC: fields of new emails. Make your selection and click next.



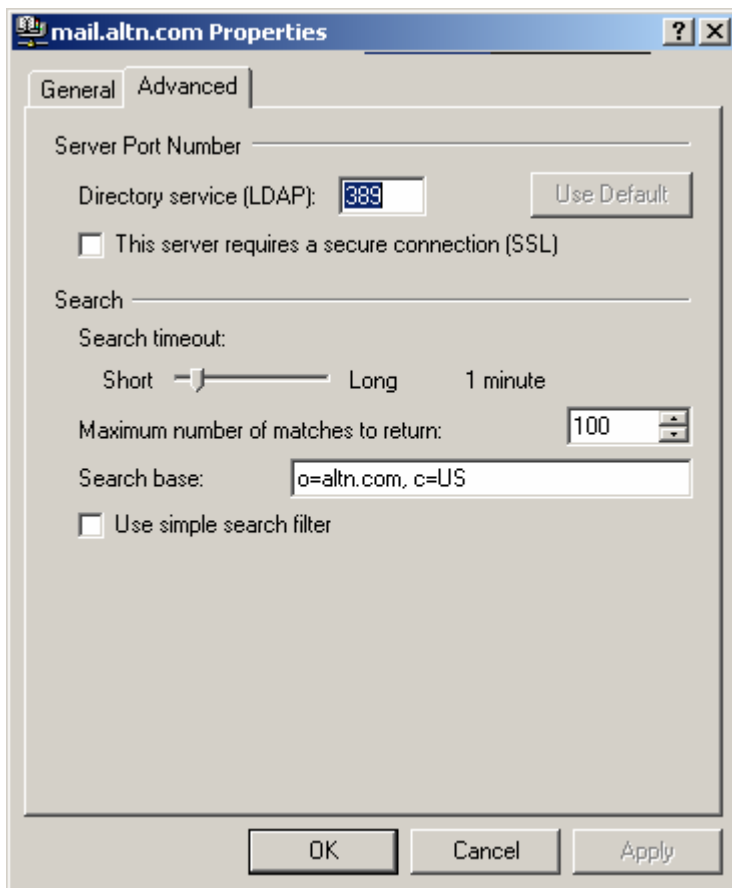
Click Finish. But you are not done configuring the LDAP client. You still need to tell the client how it will be searching the directory.



Back at the Internet Accounts window we need to highlight our new service and click Properties.



You won't be needing to configure anything here, it should already be set accordingly. If you see an error here you may correct the problem. Select the Advanced tab and move on.



Server Port Number

By default you will be using port 389, in some cases you may be running an Active Directory on your server and would have configured LDAemon to use a port other than 389, if this is the case edit the LDAP port to correspond to the port you configured LDAP to use.

Search

The search base is the same thing as the Base DN in your LDAemon/LDAP configuration. So enter the search base/base DN accordingly.